

# Demonstration Projects

A series of ideas for Demonstration Projects was proposed to the AAG.

Based on feedback and recommendations of the AAG, the team developed two Demonstration Project concepts focused on special habitat restoration areas at key connection points, or **Arroyo Thresholds**.



I. "Woodlands Loop"



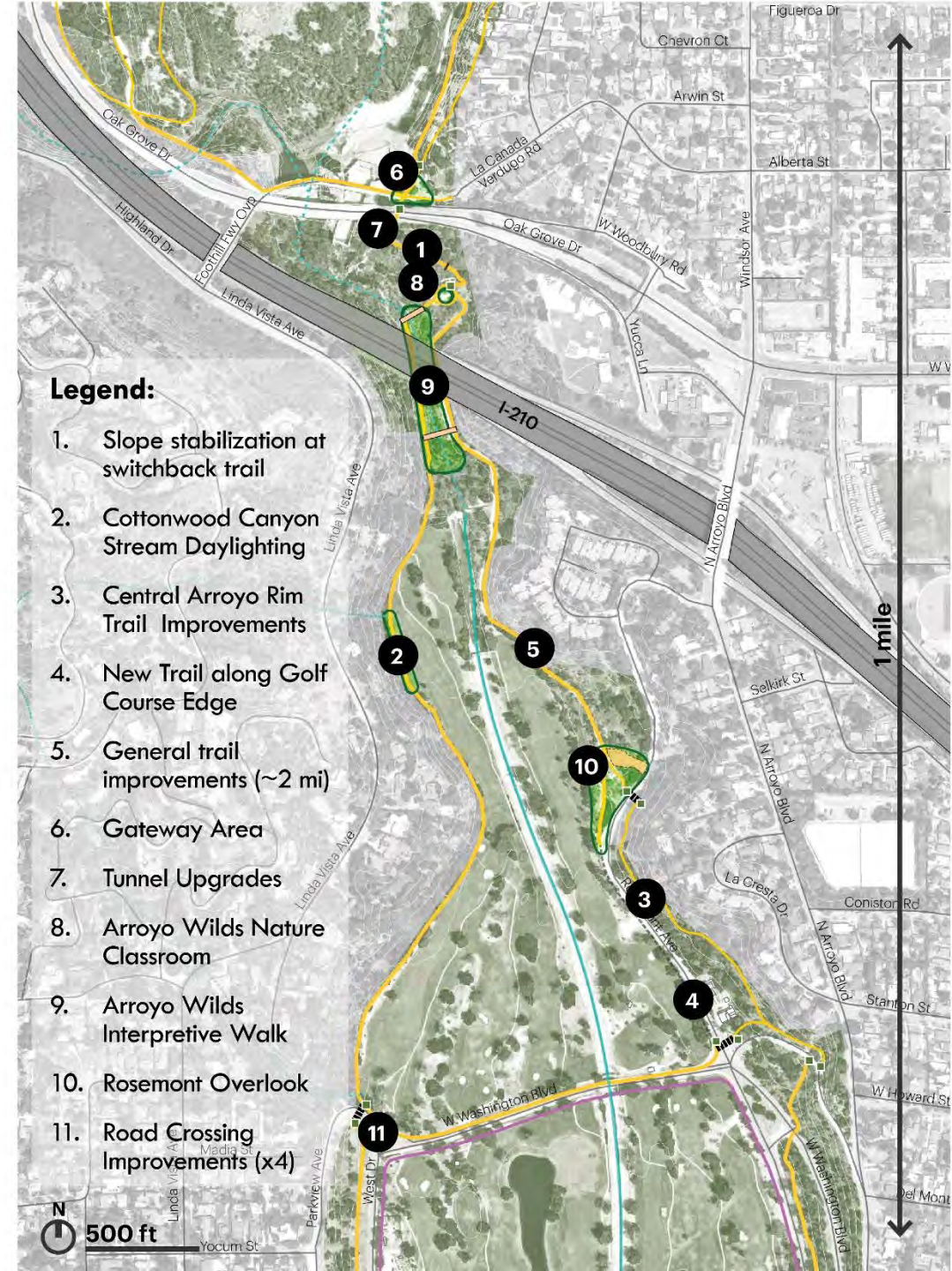
II. "Streamside Walk"

# I. WOODLANDS LOOP OVERVIEW

This project creates a two mile loop that draws visitors through a forest stretch of trail towards the soft-bottom “Arroyo wilds” nature area, showcasing the ecological, cultural and infrastructural diversity of the Arroyo Seco just below Devil’s Gate Dam.

## Key Elements:

- Major trail improvements to disconnected segments
- Improved connectivity across Devil’s Gate Dam
- Improved safety and wayfinding
- Arroyo Wilds Interpretive Circuit & Nature Classroom
- New naturalized parking & overlook area



# I. WOODLANDS LOOP PROPOSED ELEMENTS

## Existing Conditions to be Improved



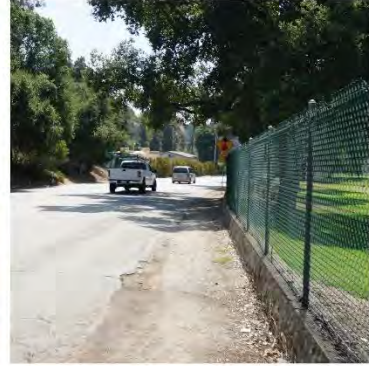
Switchback trail erosion



Cottonwood Canyon inundation



Central rim trail erosion



Trail along golf course



Road crossing condition



Tunnel interior

## Examples of Potential Improvements



Gateway landmark example



Nature classroom example



Footbridge example



Natural parking example

# I. WOODLANDS LOOP | EXISTING CONDITIONS



*Existing conditions at base of switch back trail*

# I. WOODLANDS LOOP | EXISTING CONDITIONS



- 1 Uneven trail surface
- 2 Slope erosion
- 3 Wayfinding opportunity
- 4 Seating opportunity
- 5 Safety issue at steep edge
- 6 Trail edge undefined
- 7 Vegetation maintenance needed
- 8 Opportunity for nature classroom
- 9 Opportunity for habitat restoration

*Existing conditions at base of switch back trail*

# I. WOODLANDS LOOP | PROPOSED VISION



*Artist rendered interpretation of improvements*

# I. WOODLANDS LOOP | PROPOSED VISION



- 1 Trail surface restoration
- 2 Erosion stabilization
- 3 Wayfinding signage
- 4 Natural seating
- 5 Simple handrail
- 6 Log trail edge
- 7 Vegetation maintenance
- 8 Arroyo Wilds nature classroom
- 9 Habitat Restoration

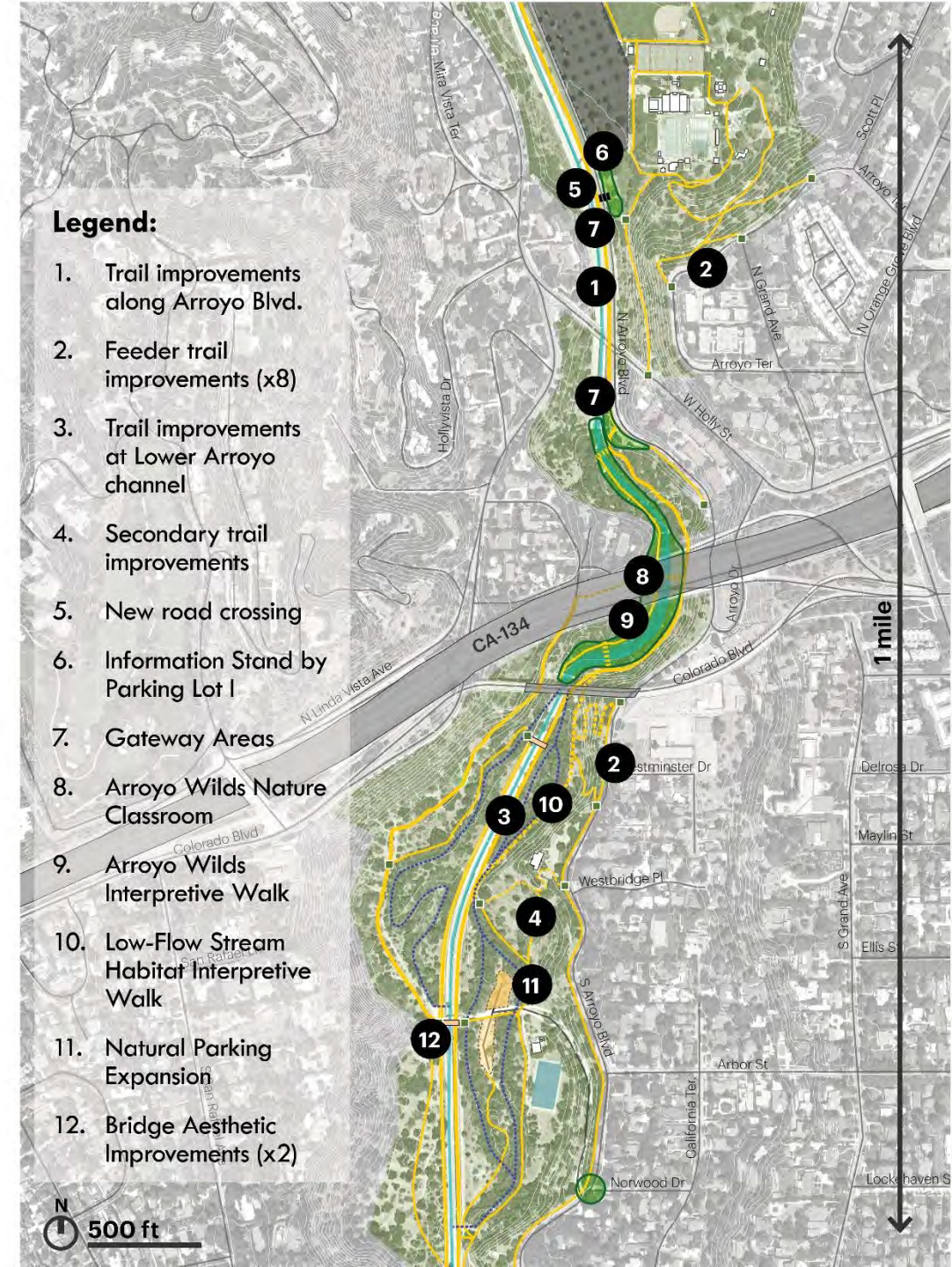
*Artist rendered interpretation of improvements*

## II. STREAMSIDE WALK OVERVIEW

This project improves connectivity at the Northern entry into the Lower Arroyo and draws visitors to the soft bottom “Arroyo Wilds” and low-flow stream restoration area, creating improved access to, across and through the naturalized stream areas.

### Key Elements:

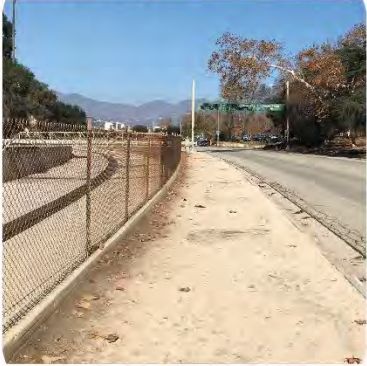
- New gateway experience and improved connectivity from RBAC to Lower Arroyo
- Improved access to Arroyo from feeder trails
- Arroyo Wilds Interpretive Circuit & Nature Classroom
- Expanded natural parking
- Improved wayfinding at critical junctures
- Lower Arroyo Main Entry Improvements (by DPW)





## II. STREAMSIDE WALK PROPOSED ELEMENTS

### Existing Conditions to be Improved



Trail at Arroyo Blvd.



Feeder trail condition



Trail along Lower Arroyo Channel



Secondary trail condition



Parking area to be expanded



Bridge to be improved

### Examples of Potential Improvements



Gateway landmark example



Nature classroom example



Footbridge example



Information stand example

## II. STREAMSIDE WALK | EXISTING CONDITION



*Existing conditions under CA-134 overpass*

## II. STREAMSIDE WALK | EXISTING CONDITION



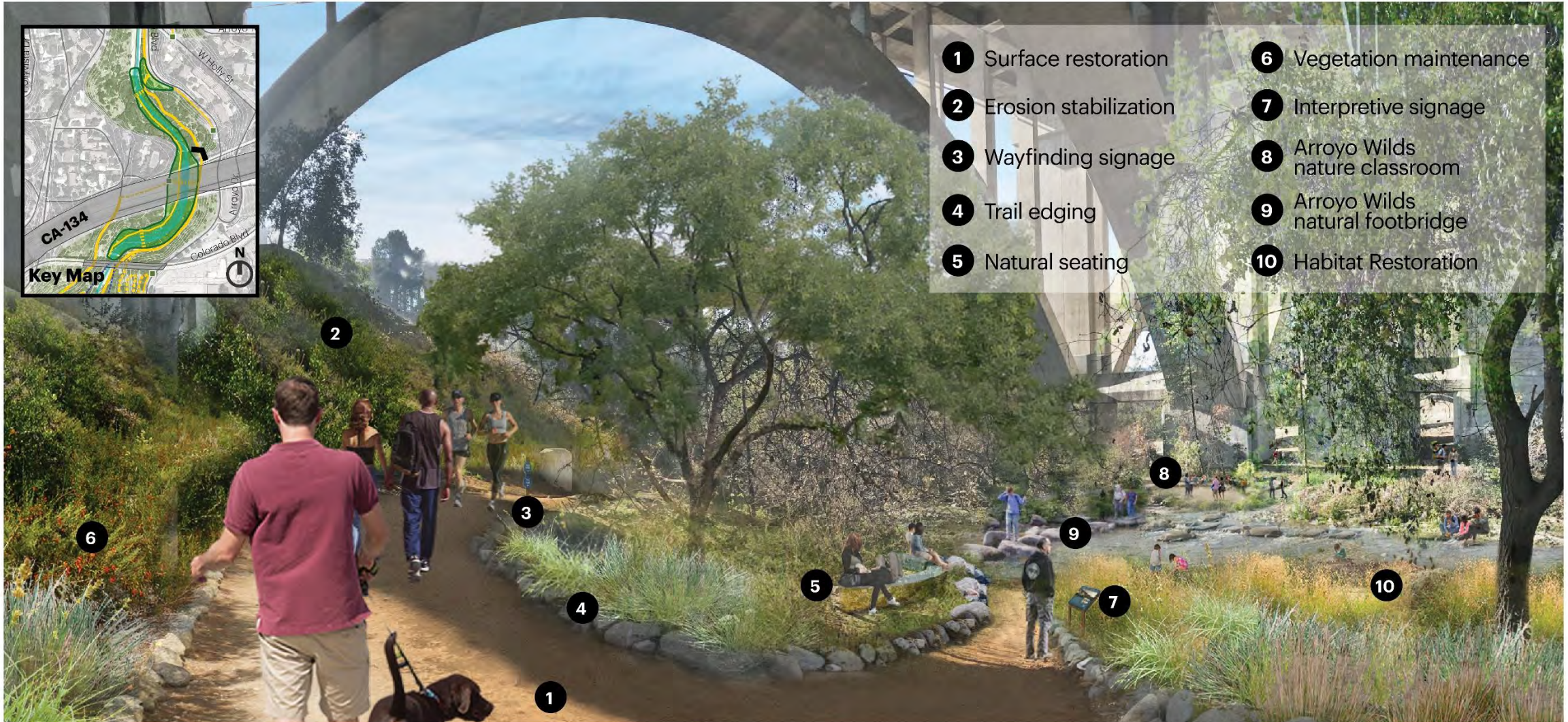
Existing conditions under CA-134 overpass

## II. STREAMSIDE WALK | PROPOSED VISION



*Artist rendered interpretation of improvements*

## II. STREAMSIDE WALK | PROPOSED VISION



Artist rendered interpretation of improvements